

Divisible 23,576 Foot Distribution Center Available

223 Omega Parkway, Shepherdsville, KY 40165

Listing ID: 29843893
Status: Active
Property Type: Office For Lease
Office Type: Business Park, Flex Space
Contiguous Space: 23,576 SF
Total Available: 23,576 SF
Lease Rate: \$3.70 PSF (Annual)
Base Monthly Rent: \$7,269
Lease Type: NNN
Loading: 3 Docks, 1 Door
Ceiling: 24 ft.



Overview/Comments

Stand alone building constructed in 2014 available for lease in Cedar Grove Business Park. Excellent condition with small office area. Ready for move-in within 60 days of notice.

More Information Online

<http://www.kcrea.com/listing/29843893>



QR Code

Scan this image with your mobile device:

General Information

Office Type:	Business Park, Flex Space	Class of Space:	Class B
Zoning:	IL - Light Industrial	Building/Unit Size (RSF):	23,576 SF

Available Space

Suite/Unit Number:	1	Lease Rate:	\$3.70 PSF (Annual)
Space Available:	23,576 SF	Lease Type:	NNN
Minimum Divisible:	23,576 SF	Conference Rooms:	1
Maximum Contiguous:	23,576 SF	Offices:	2
Space Type:	Sublet	Kitchen/Breakroom:	Yes
Date Available:	09/10/2015	Parking Spaces:	0

Area & Location

Market Type:	Large	Highway Access:	Located at the front of Cedar Grove Business park less than a half mile from I-65.
Side of Street:	West	Airports:	About 15 minutes south of UPS Global Hub and SDF
Road Type:	Paved	Area Description:	The premiere light industrial / distribution park in the region.
Property Visibility:	Excellent		
Transportation:	Highway, Airport		

Building Related

Total Number of Buildings:	1	Parking Description:	5 trailer spaces not counting the docks, surface parking for 27 cars.
Number of Stories:	1	Ceiling Height:	24
Year Built:	2014	Loading Doors:	1
Roof Type:	Flat	Loading Docks:	3
Construction/Siding:	Block	Heat Source:	Central, Other
Exterior Description:	Steel building with masonry exterior		

Internet Access: Cable, DSL
Interior Description: 400-500 feet of office, remainder warehouse with
24 foot ceiling height.

Land Related

Zoning Description: Light Industrial

Location

Address: 223 Omega Parkway, Shepherdsville, KY 40165
County: Bullitt
MSA: Louisville/Jefferson County



Property Images



DSCN3597



DSCN3593



DSCN3624



DSCN3619



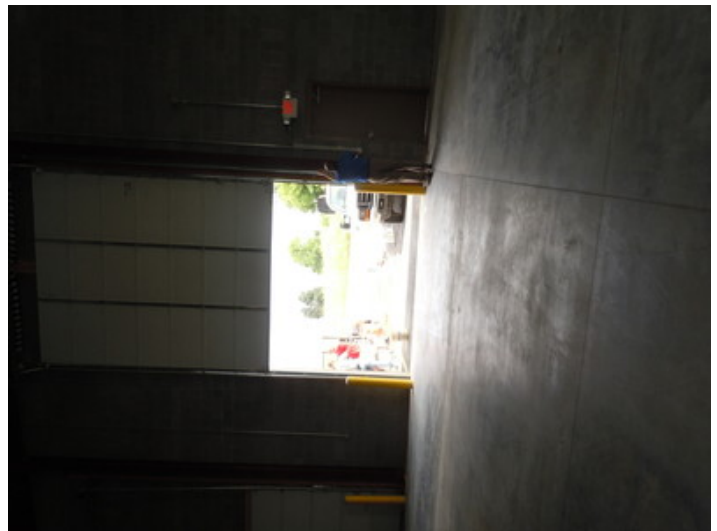
DSCN3622



DSCN3617



DSCN3620



DSCN3616

Property Contacts



Patrick D Flynn

The Flynn Group

502-376-2594 [M]

502-459-9975 [O]

pfflynn@flynnbrothers.com